

## Graveyard Fence

### Materials:

- 6—10ft 2x3 Wood
- 10—10ft ¾" PCV Pipe
- Paint (I used 4 cans of black spray paint and could not cover it all a nice solid color. Next time I am just going to get a can of paint and brush it on to make sure it covers)

Makes 3 10ft lengths of fence

### Step 1

- Cut the PCV pipe in 2 ½ ft lengths or so little short won't make a difference
- Drill holes in the 2x3 3inch apart



### Step 2

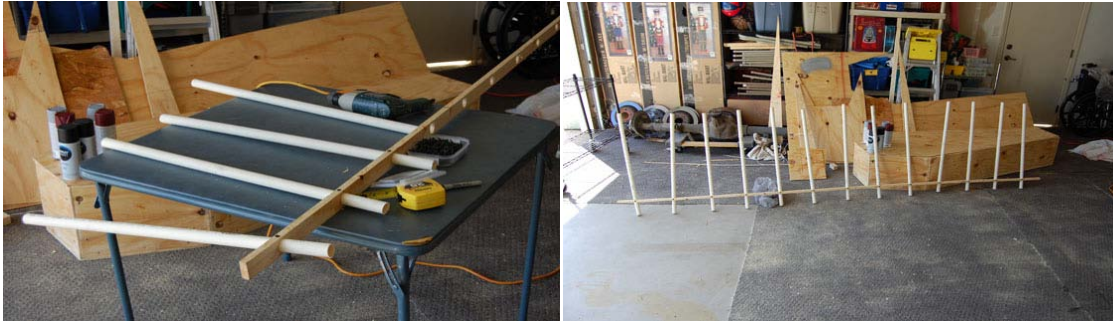
- Paint everything now to get a nice coat



As you can see I painted after I was done, and it made it more difficult

### Step 3

- Put the PCV through each of the holes on 1 piece of wood
- Make sure they are level (so they stand up nicely)
- Drill them in place



### Step 4

- Add the top piece of wood (I made sure it was not even so give the effect that the fence was breaking down)
- Drill them in place



### Step 5

- Do Steps 1—4 for the other two lengths of fence

